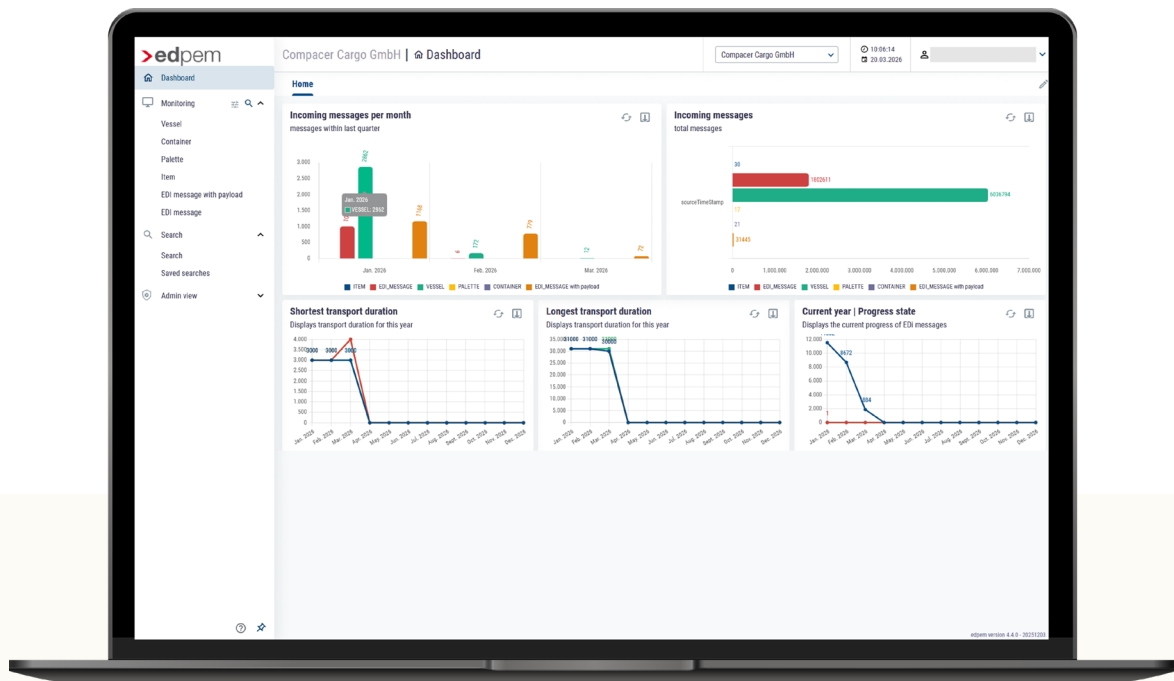


edpem – The Interactive Control Center for **Your Business Processes**

edpem is a proactive Process Event Monitoring System for enterprise-wide **end-to-end monitoring and control** of business processes.

With **release 4.4**, **edpem** continues its consistent evolution: from a purely monitoring-focused tool to an **interactive control center** that intelligently connects analysis and action.

edpem translates technical events into **business-understandable process information** – in real time, role-based, and context-sensitive. Companies identify operational risks at an early stage, intervene **directly from within the monitoring environment**, and ensure stable processes, SLAs, and customer satisfaction.



WHY EDPEM? KEY BENEFITS AT A GLANCE

End-to-end transparency instead of isolated alerts

- Holistic view of processes, systems, documents, and partners
- Deviations become visible **in their business context**, not just technically

Business intelligence derived from technical events

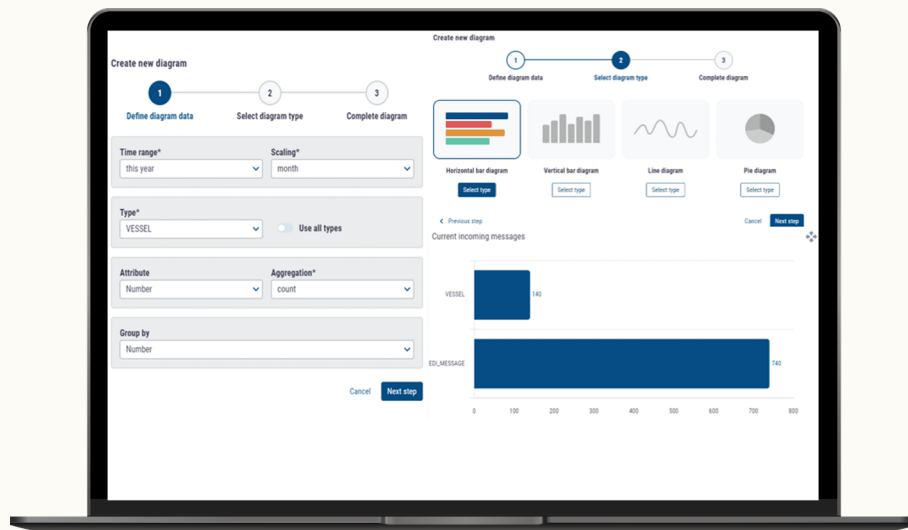
- Real-time aggregation of technical data streams
- Translation into **business-relevant events, KPIs, and risks**
- Different views for management, business departments, and IT

Interactive control instead of passive observation (Release 4.4)

- Monitoring becomes **active process control**
- Users intervene directly in running processes – without switching systems

Agile mashup concept

- Interactive dashboards, freely extensible
- Integration of external data sources and systems
- Flexible customization without development effort



Measurable support for sustainability & ESG

- Reduced rework, waste, and resource consumption
- Reliable process data as a foundation for ESG reporting-Reporting

Investment protection & fast implementation

- No existing BPM system required
- No process re-engineering
- Passive, non-intrusive monitoring without interference in source systems

EDPEM RELEASE 4.4 – FROM MONITORING TO CONTROL CENTER

With version 4.4, **edpem** closes the gap between **identification and action**.

1. Active workflows – from observer to actor

The most important innovation: **user-driven workflow actions directly from edpem**.

- **Context-sensitive actions**
Depending on the status or attributes of an object, suitable action buttons are displayed.
- **Seamless backend integration**
Actions in **edpem** trigger automated workflows in **edbic** or other backend systems.

2. Clustering – ready for enterprise requirements

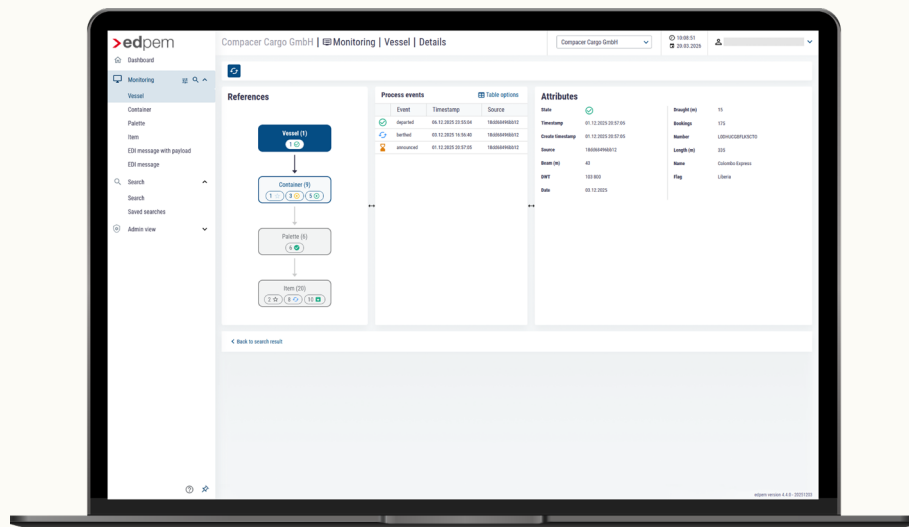
edpem 4.4 supports clustering for maximum availability.

- **Scalable:** Grows with your requirements
- **Highly available:** Fail-safe monitoring of mission-critical processes
- **High performance:** Efficient load distribution across multiple nodes

3. References – the entire process chain in view

The new reference feature makes dependencies transparent.

- Monitoring of **related documents and objects**
- Visualization of complete relationship chains instead of isolated events
- Logically traceable links across system and process boundaries



4. View conditions – personalized data filtering

Data views can now be controlled even more precisely.

- **Attribute-based filters**, e.g. display only specific time ranges or status values
- **Role- and group-specific views**
Different users see exactly the data relevant to them

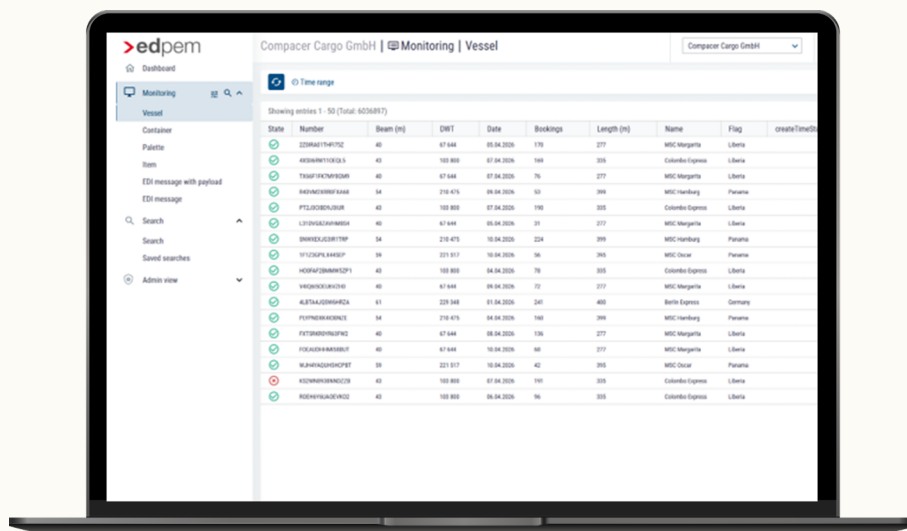
5. Optimized installation – faster productivity

The installation process has been fundamentally simplified.

- Significantly reduced setup times
- Faster project starts
- **Massively reduced time to value**

TYPICAL USE CASES

- **Logistics & Supply Chain:** Tracking & tracing, supply chain monitoring
- **Production & Industry 4.0:** Manufacturing and machine monitoring incl. IIoT
- **Digital retrofit:** Integration of legacy equipment without replacement
- **Sales & customer management:** Transparency of order and delivery status



- **Finance & document processing:** Audit-proof process tracking

- **Service & SLA management:** Active SLA monitoring and escalation

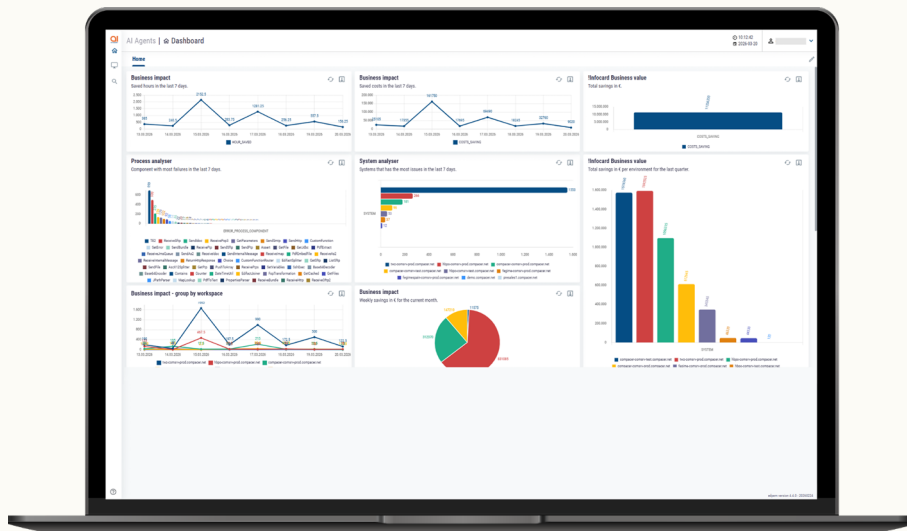
ARCHITECTURE, INTEGRATION & SECURITY

- Web-based architecture based on industry standards (Java, JavaScript, React)
- **Non-intrusive monitoring** without write access to databases
- Role-based access control (RBAC)
- Certified operation according to ISO/IEC 27001
- Seamless integration with **edbic** for end-to-end monitoring from technology to business process



CONCLUSION

edpem 4.4 transforms monitoring into an **interactive control center**. The combination of business transparency, active workflows, and enterprise robustness enables companies **not only to analyze – but to act with purpose**.



We give **your company** a digital boost